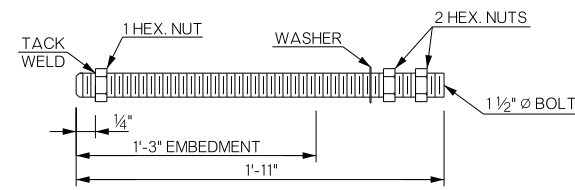
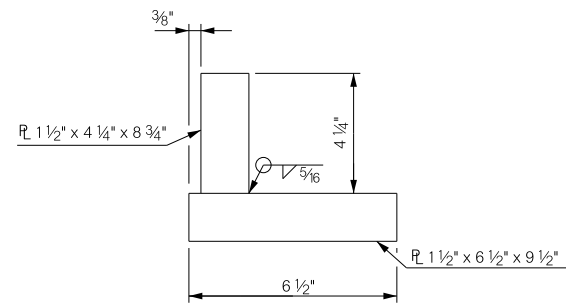


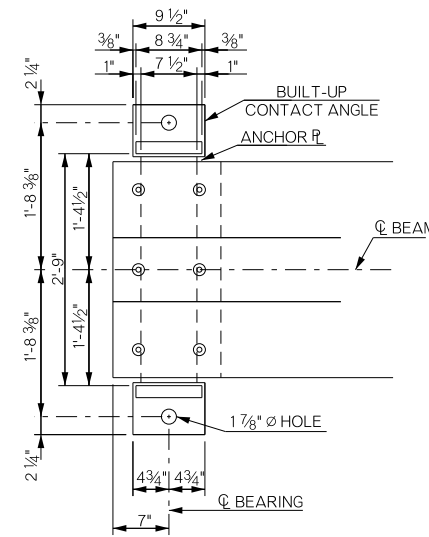
REVISIONS		
REV. NO.	DESCRIPTION	DATE



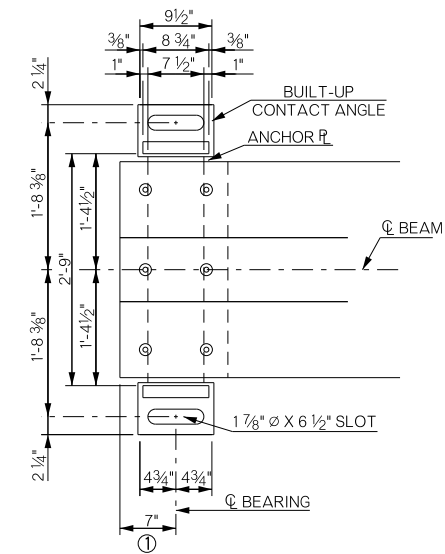
**ANCHOR BOLT DETAIL**



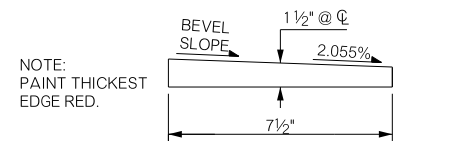
**BUILT-UP CONTACT ANGLE DETAIL**



**FIXED BEARING PLAN**

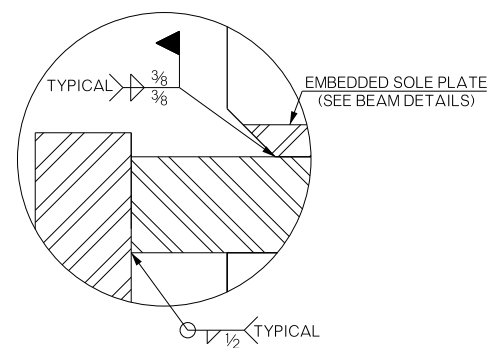


**EXPANSION BEARING PLAN**

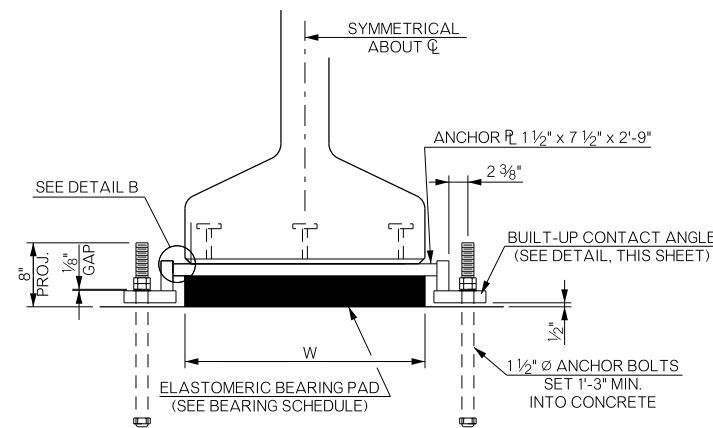


**BEVELED ANCHOR PLATE DETAIL**

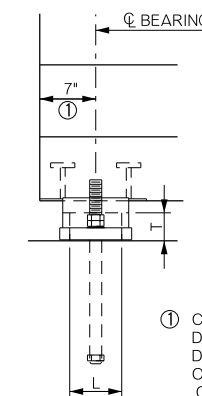
NOTE:  
BEVELED ANCHOR PLATE IS REQUIRED WHEN ANGLE BETWEEN BEAM SUPPORTS DUE TO ROADWAY GRADE EXCEEDS 1%. BEVEL SLOPE TO MATCH ANGLE BETWEEN BEAM SUPPORTS AND HORIZONTAL.



**DETAIL B**



**END VIEW**



**SIDE VIEW**

**BEARING ASSEMBLY DETAILS**

TYPE J P.C. BEAM BEARING SCHEDULE				
SPAN	60 DUROMETER ELASTOMERIC BEARING PAD			
	SIZE (T x L x W)	COVER LAYER ②	INNER LAYER	LAMINATE LAYER
130'	4 1/8" x 7" x 2'-6"	2 - 1/4"	7 - 3/8"	8 - 1/8"

② BONDING TO ANCHOR PLATE NOT REQUIRED

**BEARING ASSEMBLY NOTES:**

PROVIDE STRUCTURAL STEEL FOR ANCHOR PLATES AND BUILT-UP CONTACT ANGLES IN ACCORDANCE WITH ASTM A240 (AUSTENITIC STAINLESS STEEL, TYPE 316, CHARPY V-NOTCH TESTING NOT REQUIRED). FOR ANCHOR BOLTS, PROVIDE CONTINUOUSLY THREADED BARS IN ACCORDANCE WITH ASTM A320, CLASS 2, GRADE B8M (AUSTENITIC STAINLESS STEEL, TYPE 316, CHARPY V-NOTCH TESTING NOT REQUIRED). USE AUSTENITIC STAINLESS STEEL NUTS AND WASHERS CONFORMING TO ASTM A194, GRADE 8M AND ASTM A320, RESPECTIVELY. PERFORM ALL WELDING CONSISTENT WITH PROCEDURES FOR STAINLESS STEEL.

BRIDGE "A" SH-33 OVER COTTONWOOD CREEK	LOGAN COUNTY	Design	GT	11/15
DETAILS OF TYPE J P.C. BEAM BEARING ASSEMBLIES		Detail	MAP	8/15
		Check	TT	7/16
STATE OF OKLAHOMA		DEPARTMENT OF TRANSPORTATION	Job Piece No. 21860(04)	Sheet No. B053